



OFFICE SPACE DESIGN

LAW FIRM - SELECT PAGES

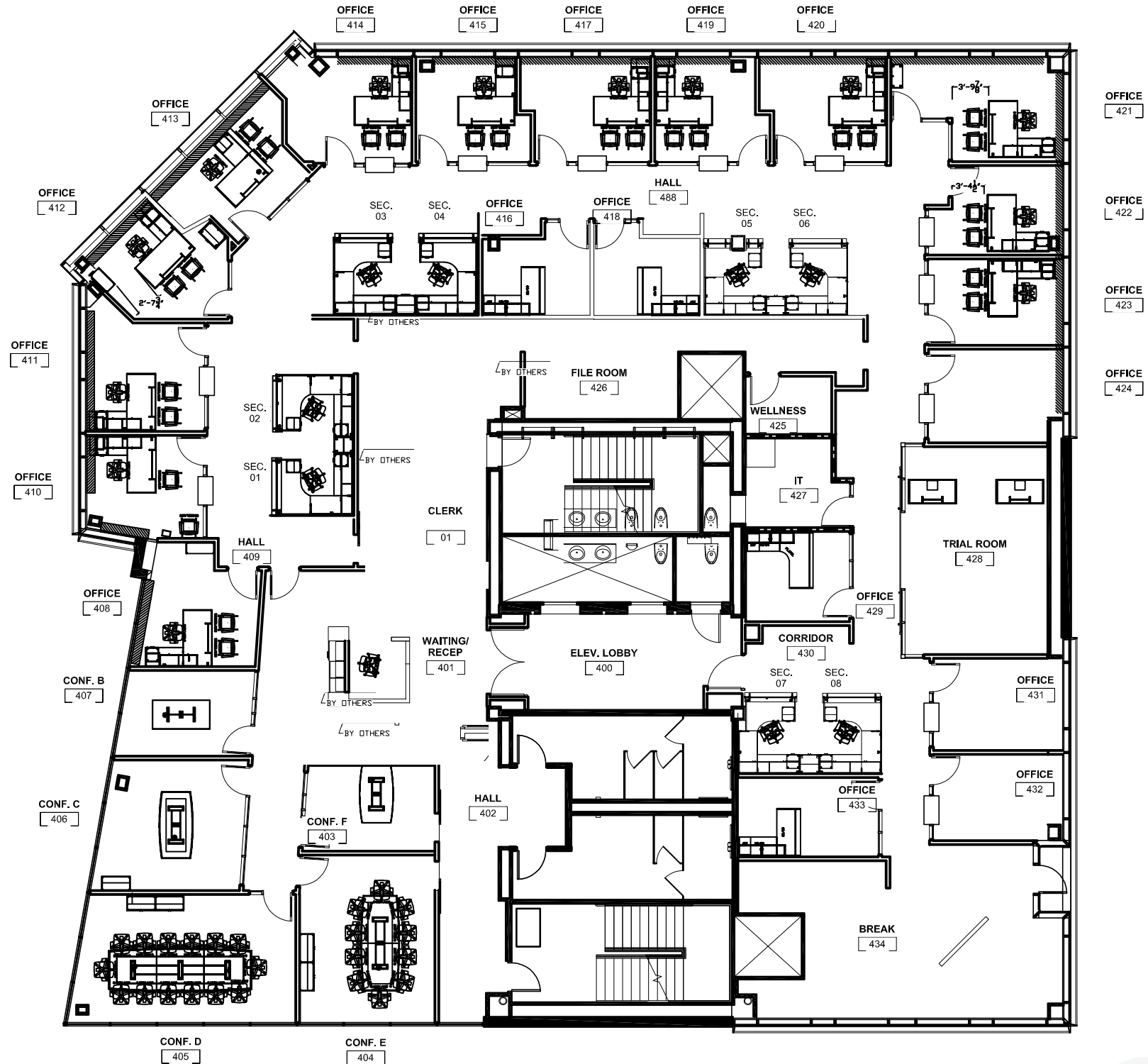
Furniture Proposal

April 3, 2016



OFFICE SPACE DESIGN

Overall Floor Plan

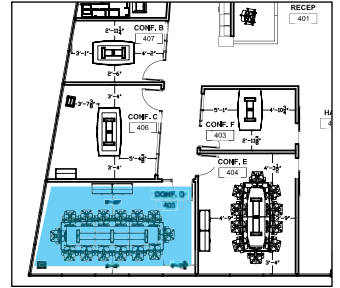


Plan | Not to Scale

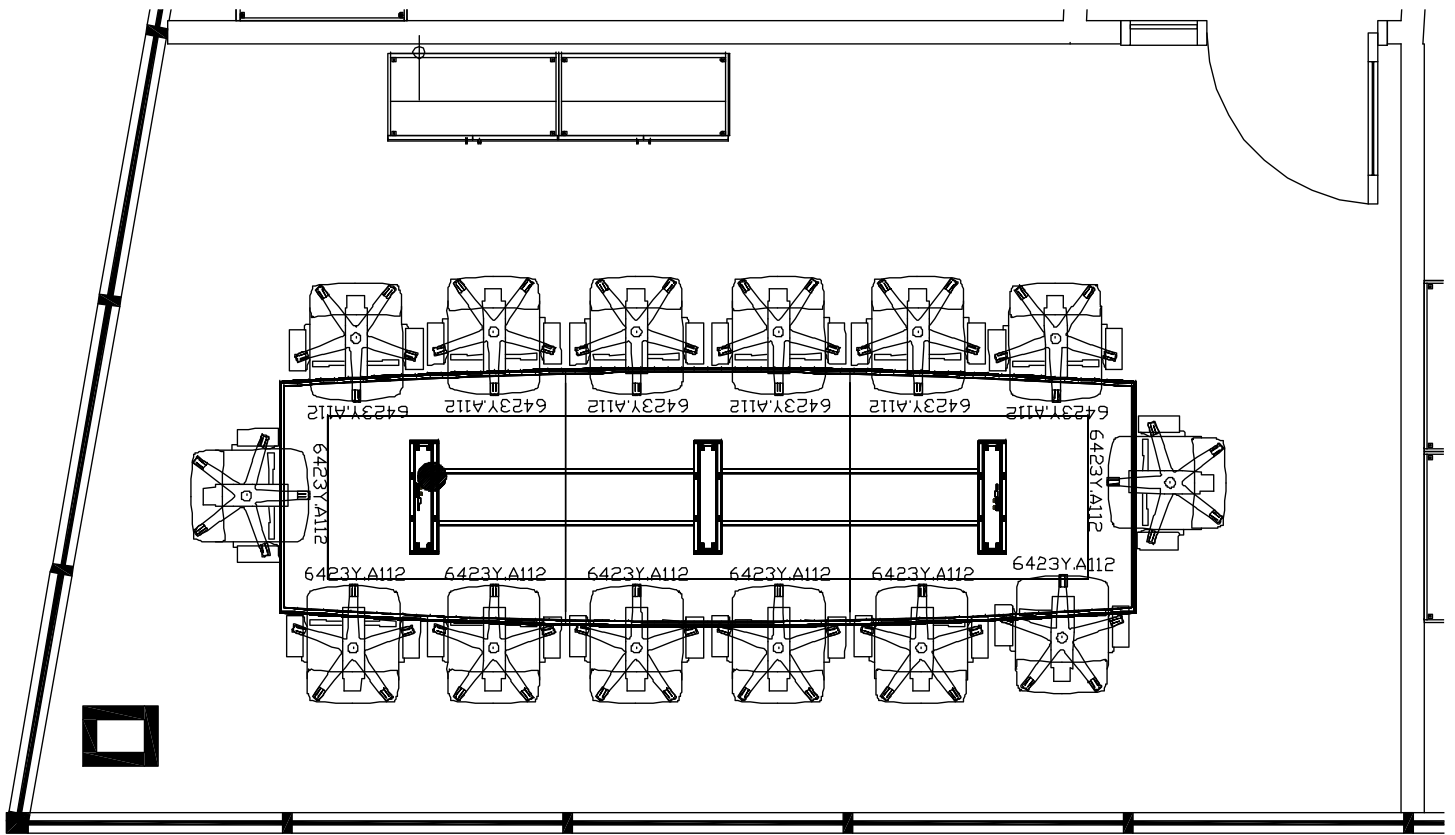


OFFICE SPACE DESIGN

Conference Room D | Plan



KEY

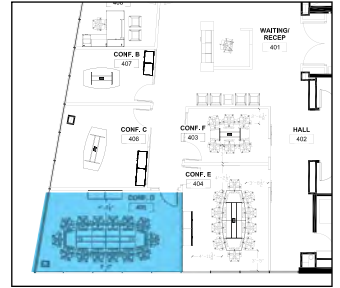


Plan | Not to Scale



OFFICE SPACE DESIGN

Conference Room D | 3D



KEY

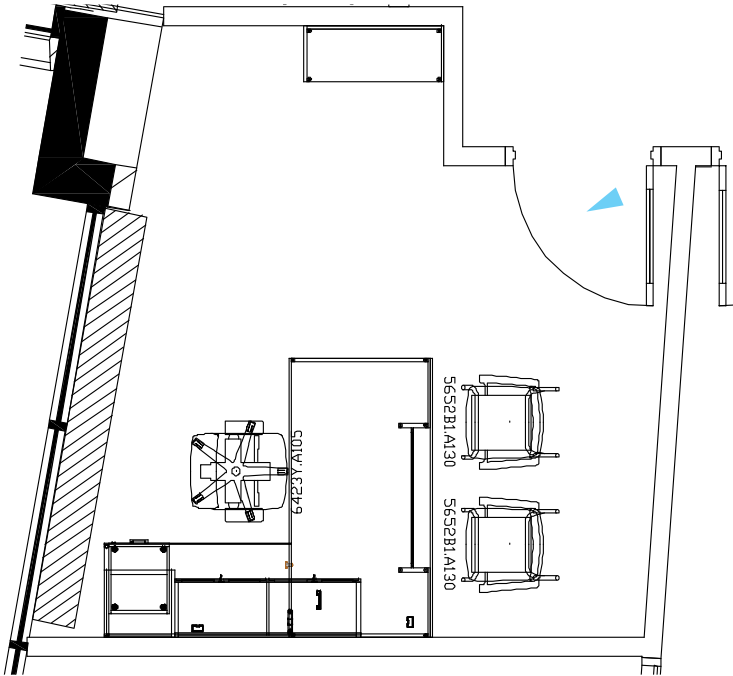


Chair Quoted with Black Base and Arm as Shown
Grade 2 Element, Chalk (as shown)

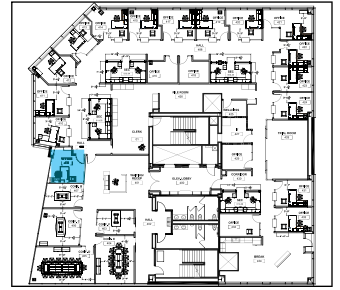


OFFICE SPACE DESIGN

Private Office 408 | Plan and 3D



Plan | Not to Scale



KEY



Guest Seats Quoted with Grade 3 Upholstery (as shown)

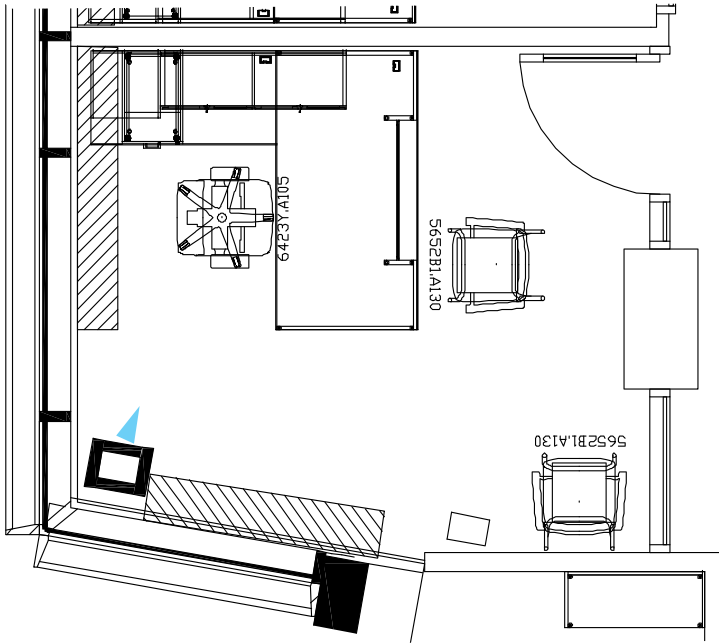


Task Chair Quoted with Grade 2 Upholstery (as shown)

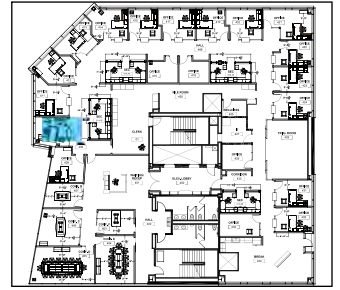


OFFICE SPACE DESIGN

Private Office 410 | Plan and 3D



Plan | Not to Scale



KEY



Guest Seats Quoted with Grade 3 Upholstery (as shown)

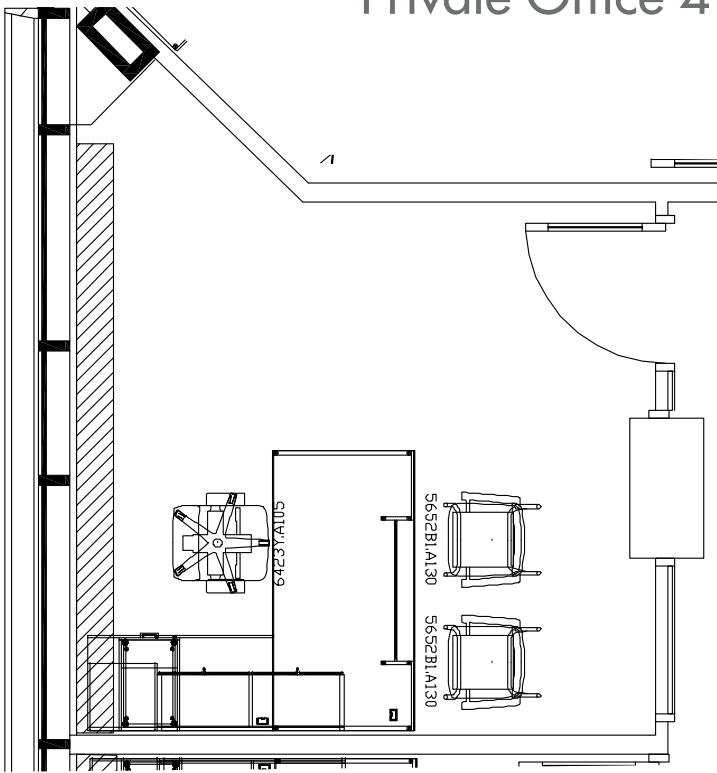


Task Chair Quoted with Grade 2 Upholstery (as shown)

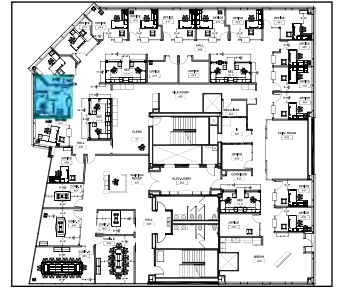


OFFICE SPACE DESIGN

Private Office 411 | Plan and 3D



Plan | Not to Scale



KEY



Guest Seats Quoted with Grade 3 Upholstery (as shown)



Task Chair Quoted with Grade 2 Upholstery (as shown)



Private Offices | Quote

[Continued]

Room: Office 422

114	Accessory, Bulletin board, wall mounted, 42 L x 20 H. Fabric tackboard. Grade 2 fabric.	1	\$ 145.24	\$ 145.24
115	Desk, bridge/return, 42L.x 24D.x 30H. Left return. Hidden right leg. 10" flush modesty panel. Wavecrest edge, working side. Cable access grommet center in	1	\$ 234.53	\$ 234.53
116	Desk, rectangular, 72L. x 36D. x 30H. Laminate full leg left. Laminate full leg right. 21" inset frosted acrylic modesty panel. Wavecrest edge, working and visitor side.	1	\$ 619.71	\$ 619.71
117	Storage, hutch, 42L. x 15D. x 15 high, not incl. opt. top. 15 in. bin height. Full laminate leg left, full laminate leg right. Wall mount back. Aluminum framed frosted	1	\$ 525.51	\$ 525.51
118	Storage, pedestal, 16L. x 18D. x 28 High, plus levelers. Standard base. Laminate, full back. File, box combo, horizontal grain. Horizontal 96mm pull, grade 1. Gang lock.	1	\$ 311.08	\$ 311.08
119	Storage, stack, 18L. x 18D. x 35 high, not incl. opt. top. Laminate, full back. Open. No Top. No grommet. No fabric. No Pulls, no drilling.. Non locking.	1	\$ 152.11	\$ 152.11
120	Wavecrest Trim 1" thick, price per 1" length. For custom trim pricing.	36	\$ 1.96	\$ 70.56
121	Focus, Side Chair, Mesh Back, Silver Frame, A130 Arm	2	\$ 221.41	\$ 442.82
122	Prava, Highback, Enhanced Synchro Cntrl, A105 Arm	1	\$ 466.30	\$ 466.30
			Sub-total:	\$2,967.86

Room: Office 423

123	Accessory, Bulletin board, wall mounted, 48 L x 20 H. Fabric tackboard. Grade 2 fabric.	1	\$ 161.43	\$ 161.43
124	Desk, bridge/return, 48L.x 24D.x 30H. Right return. 10" flush modesty panel. Wavecrest edge, working side. Cable access grommet center in top. No grommet in	1	\$ 250.24	\$ 250.24
125	Desk, rectangular, 72L. x 36D. x 30H. Laminate full leg left. Laminate full leg right. 21" inset frosted acrylic modesty panel. Wavecrest edge, working and visitor side.	1	\$ 619.71	\$ 619.71
126	Storage, hutch, 48L. x 15D. x 15 high, not incl. opt. top. 15 in. bin height. Full laminate leg left, full laminate leg right. Wall mount back. Aluminum framed frosted	1	\$ 607.93	\$ 607.93
127	Storage, pedestal, 16L. x 18D. x 28 High, plus levelers. Standard base. Laminate, full back. File, box combo, horizontal grain. Horizontal 96mm pull, grade 1. Gang lock.	1	\$ 311.08	\$ 311.08
128	Storage, stack, 18L. x 18D. x 35 high, not incl. opt. top. Laminate, full back. Open. No Top. No grommet. No fabric. No Pulls, no drilling.. Non locking.	1	\$ 152.11	\$ 152.11
129	Wavecrest Trim 1" thick, price per 1" length. For custom trim pricing.	36	\$ 1.96	\$ 70.56
130	Focus, Side Chair, Mesh Back, Silver Frame, A130 Arm	2	\$ 221.41	\$ 442.82
131	Prava, Highback, Enhanced Synchro Cntrl, A105 Arm	1	\$ 466.30	\$ 466.30
			Sub-total:	\$3,082.18

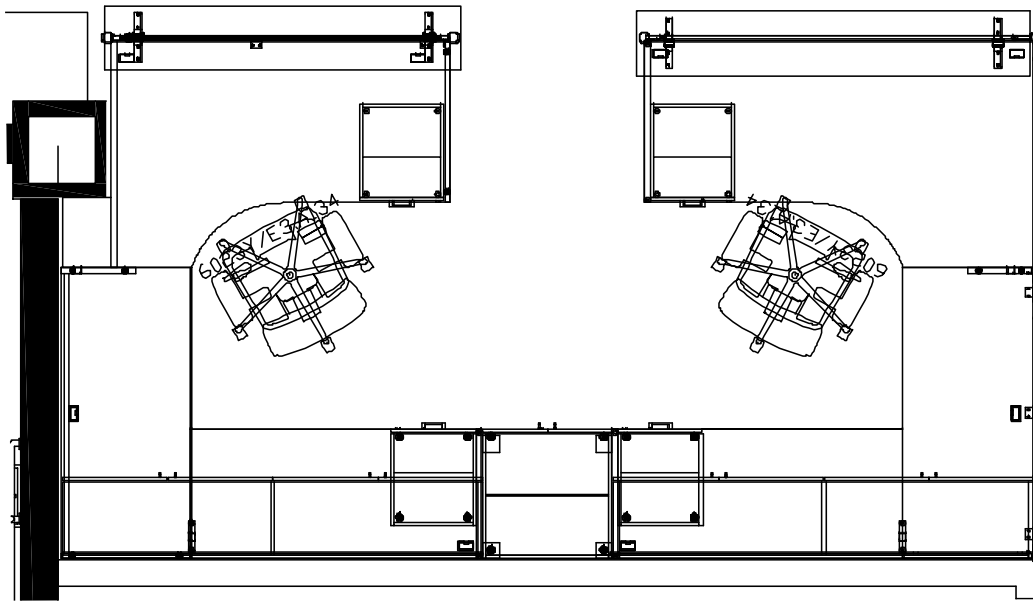
Room: Office 433

132	Focus, Side Chair, Mesh Back, Silver Frame, A130 Arm	2	\$ 221.41	\$ 442.82
			Sub-total:	\$442.82

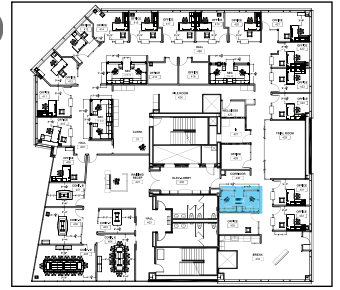


OFFICE SPACE DESIGN

Secretary Station 7 and 8 | Plan and 3D



Plan | Not to Scale



KEY



Torsa Task Chair
White Frame
Grade 2 Upholstery
Element, H2O (as shown)





Secretary Station 7 and 8 | Quote

Room: **Secretary Stations 7&8**

217	OS 64" high, clear anodized aluminum dual function connecting or end post with cap.	2	\$ 49.56	\$ 99.12
218	OS 64" high, clear anodized aluminum square post with cap.	1	\$ 78.51	\$ 78.51
219	OS Multi-Tile Panel, 48 in. long, 01 in. thick, 64 in. high. Laminate base tile, 29 in. h. Laminate 2nd tile, 21 in. h. Laminate 3rd tile, 14 in. h. No grommets.	2	\$ 291.95	\$ 583.90
220	OS Multi-Tile Panel, 72 in. long, 01 in. thick, 43 in. high. Laminate base tile, 29 in. h. Laminate 2nd tile, 14 in. h. No grommets.	1	\$ 284.09	\$ 284.09
221	Worksurface, corner, 72Lx 42D. 24" side depths. 30" main, radius corner, extended left. 3mm edge on working side. Includes universal connecting hardware. Grommets	1	\$ 199.21	\$ 199.21
222	Special OSWC72422430-RRH1 WITH 229mm (9") x 305mm (12") CUTOUT LEFT SIDE - GROMMET INSET 229mm (9") Worksurface, corner, 72Lx 42D. 24" side depths.	1	\$ 301.27	\$ 301.27
223	Worksurface, rectangular, 54Lx 24D. 3mm edge on working side, grommet centered. Includes universal connecting hardware.	1	\$ 124.63	\$ 124.63
224	OS 43" high, clear anodized aluminum square post with cap.	3	\$ 59.87	\$ 179.61
225	OS laminate leg right, 24" l x 29" h.	1	\$ 54.96	\$ 54.96
226	OS laminate leg left, 42" l x 29" h.	1	\$ 89.31	\$ 89.31
227	OS laminate leg left, 30" l x 29" h.	1	\$ 67.71	\$ 67.71
228	Storage, Wardrobe, 24L. x 24D. x 64 high, plus levelers, not incl. opt. top. Full width clothes rod. Base with levelers. Laminate, full back. Full height laminate door.	1	\$ 468.09	\$ 468.09
229	CP 3" cable tray, painted silver. 2 mounting screws.	4	\$ 7.36	\$ 29.44
230	OS 10" metal cable tray for wire mangement below worksurfaces.	2	\$ 17.67	\$ 35.34
231	OS laminate leg, 12" l x 29" h. Comes with wire management cutout. To be used where two worksurfaces join.	1	\$ 44.16	\$ 44.16
232	OS laminate leg right, 30" l x 29" h.	1	\$ 67.71	\$ 67.71
233	OS Panel, 63" long, 43" high. Laminate 1st tile 29"H, laminate 2nd tile, 14"H, no wire access grommets.	1	\$ 280.67	\$ 280.67
234	OS Transaction counter, 66L x 12D. 3mm edge on all four sides.	1	\$ 146.21	\$ 146.21
235	OS Transaction counter, 72L x 12D. 3mm edge on all four sides.	1	\$ 159.96	\$ 159.96
236	Accessory, Bulletin board, wall mounted, 78 L x 20 H. Fabric tackboard, tool rail combination. Grade 2 fabric.	2	\$ 325.80	\$ 651.60
237	Desk, bridge/return, 54L.x 24D.x 30H. Left return. 10" flush modesty panel. 3mm PVC edge, working side. Grommet left in top. No grommet in modesty panel. No	1	\$ 223.25	\$ 223.25
238	Desk, bridge/return, 54L.x 24D.x 30H. ight return. 10" flush modesty panel. 3mm PVC edge, working side. Cable access grommet right in top. No grommet in	1	\$ 223.25	\$ 223.25
239	Desk, shell, 54L. x 24D. x 30H. Laminate full leg left. Laminate recessed leg right. 10 in. laminate modesty panel. 3mm PVC edge, working side. Grommet centered in	1	\$ 208.53	\$ 208.53
240	Storage, hutch, 78L. x 15D. x 15 high, not incl. opt. top. 15 in. bin height. Full laminate leg left, full laminate leg right. Wall mount back. Laminate left door,	2	\$ 417.56	\$ 835.12



OFFICE SPACE DESIGN

Secretary Station 7 and 8 | Quote

[Continued]

241	Storage, pedestal, 16L. x 18D. x 28 High, plus levelers. Standard base. Laminate, full 2 back. File, box combo, horizontal grain. Horizontal 96mm pull, grade 1. Gang lock.	\$ 311.08	\$ 622.16
242	Storage, pedestal, 16L. x 18D. x 28 High, plus levelers. Standard base. Laminate, full 2 back. File drawers, horizontal grain. Horizontal 96mm pull, grade 1. Gang lock.	\$ 275.27	\$ 550.54
243	Torsa, Enhanced Synchro Cntrl, Multi-Adjustable Arms	2 \$ 396.18	\$ 792.36
Sub-total:			\$7,400.71



OFFICE SPACE DESIGN

Combined Total

Installation

1 \$ 5,750.00 \$ 5,750.00

Sub-total **\$5,750.00**

Sales Tax

\$ 7,232.02 \$ 7,232.02

Total PRIVATE

Approved By:

Name

Date: _____